



Thank you for purchasing our **Koso EX-01 engine hour meter**. Please read carefully the instruction sheet and keep it for future

⚠ Notice

- For proper installation, please follow the steps described below. Any damage caused by a wrong installation shall be imputed to the users.
- Do not cut or modify the wire. To avoid short circuit, do not pull the wire off the connector when installing the meter.
- Do not disassemble or change any parts
- Opening the instrument will void any warranty. Maintenance or repair should be executed by our professionals only.

⦿ MARK MEANING:

⚠ Some procedures must be followed to avoid damage caused by wrong installation.

⚠ **WARNING!** Some procedures must be followed to avoid injuries.

⚠ **CAUTION!** Some procedures must be followed to avoid any damage to the vehicle.



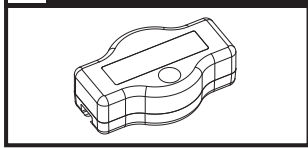
PRESS THE
BUTTON
ONCE



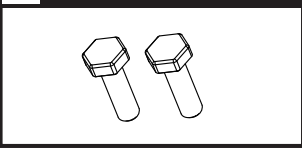
PRESS THE
BUTTON 3
SECONDS

1 Kit content

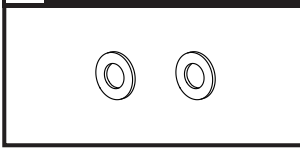
1 Meter X1



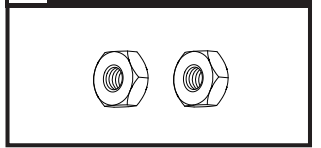
2 M3X10XP0.5 screw X2



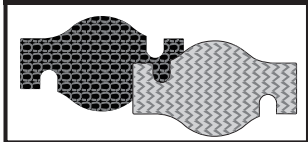
3 M3 washer X2



4 M3XP0.5 screw nut X2

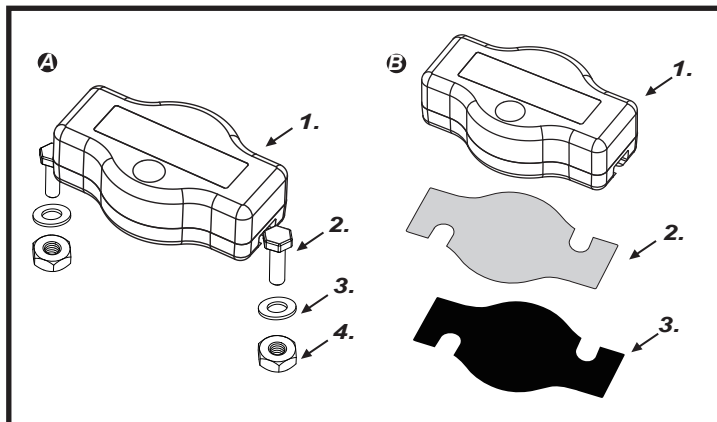


5 Velcro X1 set



NOTE Please contact your local distributor if the items received are not the same as the ones listed above.

2-1 Installation instruction

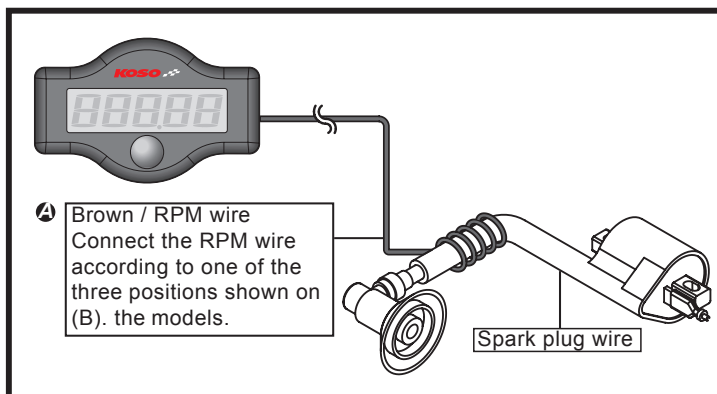


Installation steps

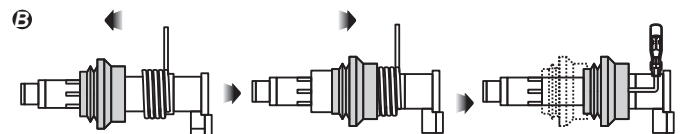
- A**
1. Engine hour meter (Accessory 1)
 2. M3 screw (Accessory 2)
 3. M3 washer (Accessory 3)
 4. M3 screw nut (Accessory 4)
- B**
1. Engine hour meter (Accessory 1)
 2. Velcro - Male (Accessory 5)
 3. Velcro - Female (Accessory 5)

NOTE Choose either Method A or B according to your need.

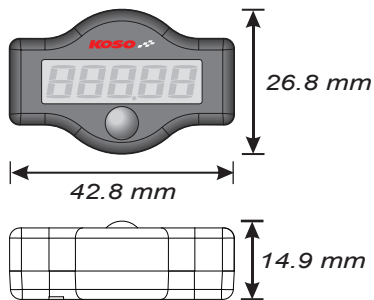
2-2 Wiring installation instruction



NOTE For motorcycle with ignition coil system, the RPM can be installed following the methods here described. Wrap the RPM wire at least 5 times around the spark plug cap as shown below.



3 Specifications



● Total engine hour meter	Display range : 0~9999 H Display unit : 1 H
● Hour meter A/B	Display range : 0.0~999.9 H Display unit : 0.1 H
● Internal battery type	CR 2032
● Battery life time	About 350 hours
● Battery self-consumed life time	About 5 years
● Effective temperature range	-10~60℃
● Meter standard	JIS D 0203
● Meter size	W42.8 X L26.8 X H14.9 mm
● Meter weight	+ or - 19g

NOTE Design and specifications are subject to change without notice!

4 Functions instruction



- While on Total Engine Hour screen, **press the button once** to enter the Engine Hour A.

NOTE When the engine hour meter starts to count, the "t" symbol will flash every 0.5 second.



- In Engine Hour A, **press the button once** to enter the Engine Hour B.



- **Holding the button for 3 seconds** will reset the Engine Hour A record.



- While on Engine Hour B, **press the button once** to enter the Total Engine Hour.



- **Holding the button for 3 seconds** will reset the Engine Hour B record.



NOTE The meter will automatically turn off if no button is pressed or if there is no signal input for more than 30 seconds.

5 Troubleshooting

The following situation does not necessarily indicate a malfunction to the meter. Check the following before taking it in for warranty.

Problem	Diagnosis
The digits do not appear or appear incorrectly.	<ul style="list-style-type: none"> ● Check if the RPM wire is connected properly. ● The meter ran out of battery and shall be replaced.

※ If the problem can still not be solved, please contact your local distributor.